



The Bupa Global Mining and Energy Forum

Health Insurance Plan | 2023/2024 Brochure

Insured by



This Plan is distributed by **The Unisure Group**
and insured by **Bupa Global**.



| BENEFITS | Tailored Essential (Africa & India) | Essential/Hospitalisation | Classic | Gold/Comprehensive | Gold with Routine Dental | Gold Superior with Routine Dental |
|---|---|---|---|---|---|---|
| FURTHER BENEFITS | | | | | | |
| Cancer treatment | Unlimited, subject to the overall limit | | | | | |
| Maternity cover | Not covered | Not covered | USD 8,150 | USD 12,250 | USD 12,250 | USD 16,300 |
| Childbirth at home or birthing centre | | | USD 1,300 | USD 1,300 | USD 1,300 | USD 1,300 |
| Medically essential caesarean section | | | USD 21,500 | USD 25,500 | USD 25,500 | USD 28,500 |
| Transplant services | Not covered | Unlimited, subject to the overall limit | Unlimited, subject to the overall limit | Unlimited, subject to the overall limit | Unlimited, subject to the overall limit | Unlimited, subject to the overall limit |
| Advanced imaging | Unlimited, subject to the overall limit | | | | | |
| Local road ambulance | | | | | | |
| Local air ambulance | USD 10,000 | USD 10,000 | USD 10,000 | USD 10,000 | USD 10,000 | USD 10,000 |
| Home nursing after in-patient treatment | USD 200 p/d up to 10 days | USD 200 p/d up to 10 days | USD 200 p/d up to 20 days | USD 200 p/d up to 30 days | USD 200 p/d up to 30 days | USD 200 p/d up to 30 days |
| In-patient cash benefit | Not covered | USD 150 p/n up to 20 nights | USD 150 p/n up to 20 nights | USD 150 p/n up to 20 nights | USD 150 p/n up to 20 nights | USD 150 p/n up to 20 nights |
| HIV/AIDS drug therapy including ART (after 1 year's membership) | Not covered | Not covered | USD 20,000 | USD 20,000 | USD 20,000 | USD 20,000 |
| Prosthetic devices | Limited to USD 4,000 ppd | Limited to USD 4,000 ppd | Limited to USD 4,000 ppd | Limited to USD 4,000 ppd | Limited to USD 4,000 ppd | Limited to USD 4,000 ppd |
| Hospice and palliative care | Not covered | USD 41,000 for entire membership | USD 41,000 for entire membership | USD 41,000 for entire membership | USD 41,000 for entire membership | USD 41,000 for entire membership |
| In-patient Rehabilitation | Not covered | Paid in full up to 30 days | Paid in full up to 30 days | Paid in full up to 30 days | Paid in full up to 30 days | Paid in full up to 30 days |
| Newborn care | Not covered | USD 150,000 (maximum benefit for all treatment received during the first 90 days after birth) | | | | |
| Compassionate visit and return | For a maximum of 5 trips per lifetime. Each visit up to USD 1,360 | | | | | |
| Compassionate visit living allowance | For a maximum of 10 days each visit. Each day up to USD 200 | | | | | |
| Health line | Included | Included | Included | Included | Included | Included |
| Dental treatment: Preventative (100%), Routine (80%), Major Restorative (50%), Orthodontic and periodontal (50%) | Not covered | Not covered | Not covered | Not covered | USD 2,100 | USD 4,200 |
| Optical | | | | | Not covered | USD 450, 10% co-pay |
| USA cover (28-day Emergency Cover Only) | 100% of costs in network. 80% of costs out of network. Treatment must be pre-authorized | | | | | |
| Assistance Cover (Evacuation & Repatriation) | Full refund, subject to the overall limit | | | | | |

GLOSSARY: p/d - per day / p/n - per night / ppd - per prosthetic device

Caring for your most valuable resource
– your people!





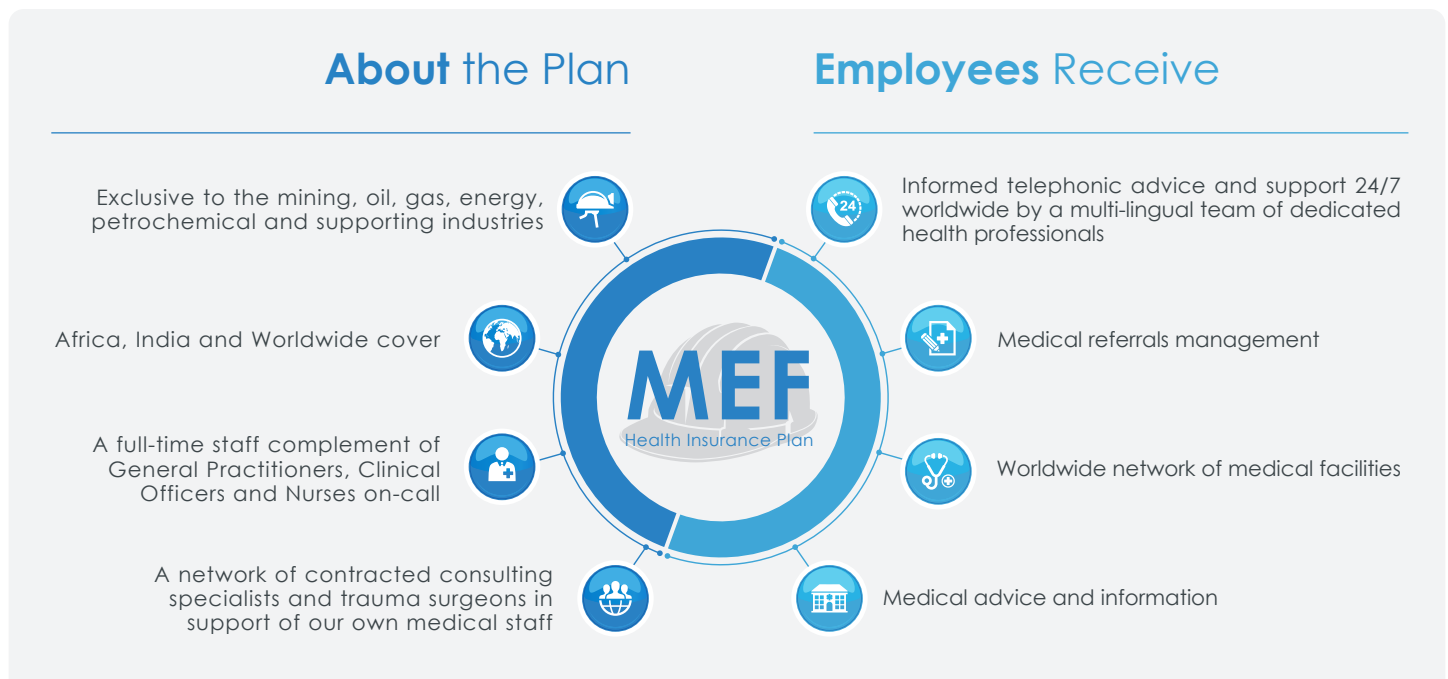
The Bupa Global Mining and Energy Forum Health Insurance Plan

This Plan is specifically designed for the mining, oil, gas, energy, petrochemical and supporting industries, offering employers material cost savings on premiums without compromising on the level of benefits and care for the members.

Should one of your employees fall ill, we understand that you would want the very best treatment available, not only for their sake, but also to minimise the disruption to your business.

About the Plan

Employees Receive



This Plan, distributed by The Unisure Group offers medical plans based on your needs, including emergency evacuation as a result of a life or limb threatening incident. These evacuations are to the nearest centre of medical excellence, subject to the terms and conditions of the policy which defines the area of cover.

About The Unisure Group / Contact Information

The **Unisure Group** is a global health and life insurance solutions provider, providing specialised employee benefit solutions for the mining, oil, gas, energy, petrochemical and supporting industries.

The Unisure Group specialises in employee benefits solutions and the cost management thereof for multinational organisations. Unisure provides you, the employer, with the certainty of knowing that your valued employees will receive the proper care in their time of need.

The **Unisure Group** has regional offices in the following locations:

| | | |
|--|---|--|
| AFRICA 139 Greenway, Greenside, Randburg Johannesburg, 2193, South Africa | EUROPE 40 Gracechurch Street, London, England EC3V 0BT, United Kingdom | ASIA D4-6-9 Solaris Dutamas, Jalan Dutamas 1, 50480, Kuala Lumpur, Malaysia |
|--|---|--|

